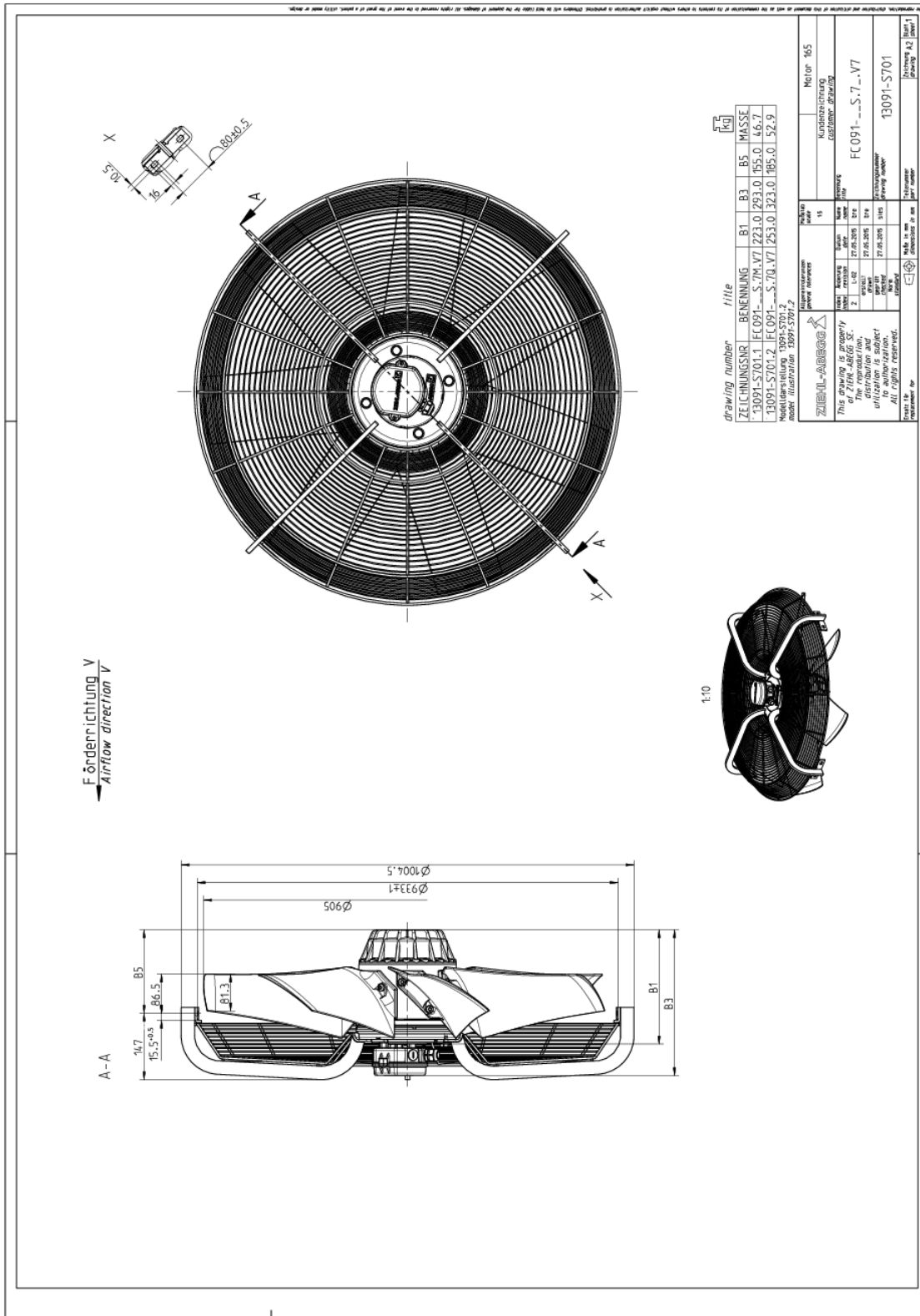


5. Product specification

Technical data

Article number	107146
Type	FC091-SDS.7Q.V7
Designation	Axial fan with diecast blades
Rated values	3~400V±10% D/Y 50Hz P ₁ 3.60/2.50kW 7.20/ 4.30A ΔI=5% 890/ 700/min COSY 0,72 60°C
Electrical connection	Terminal box K07
Min. operating temperature °C	-40
Mounting type terminal box	Mounted on Stator
Type of protection	IP54
Thermal class	THCL155
Connection diagram	1360-108XA
Rating plate	1x fixed
Fitting position	H/Vu/Vo
Motor protection	thermal contact
Impregnation	Moisture and hot climate protection
Quality of bearings	ball bearing with long-time lubrication
Material Rotor	Aluminium
Painting rotor colour rotor	Rotor 1 coat painted RAL 9005 (jet black)
Material blades	Aluminium
Painting impeller Colour blades	1 coat painted RAL 9005 (jet black)
Guard grille type	ring grille
Painting mot.suspens colour suspension	Motor suspension 1 coat paint RAL 9005 (jet black)
Weight kg	52,90
ErP Data	Efficiency η_{statA} : 38.3 % Efficiency: $N_{actual} = 41.2 / N_{target} = 40^*$ *ErP 2015

6. Drawing



Dimensions in mm

Shown drawing is just to show the dimensions of the fan.

www.ziehl-abegg.com
 Erstellungsdatum

Movement by Perfection | Bewegung durch Perfektion



Ошибка! Текст указанного стиля в ,
Ошибка! Текст указанного стиля в ,

The Royal League

Die Königsklasse

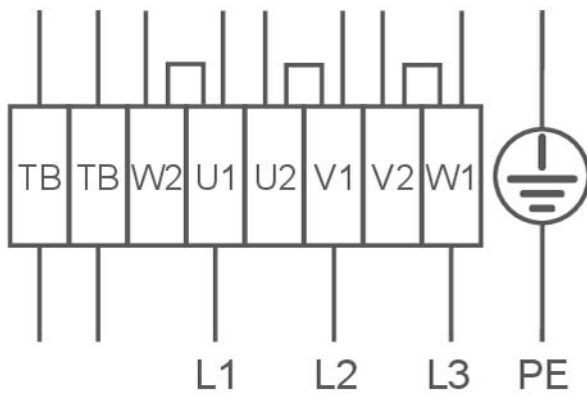
7. Connection diagram

1360-108XA

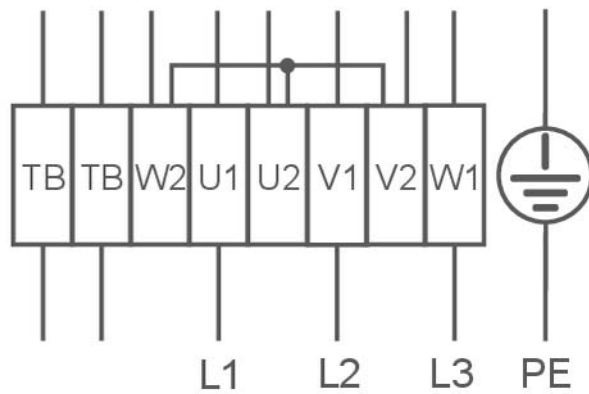
3~ motor, 2 speeds (Δ/Y switch over) with thermostatic switch (if built in). Without bridge when using speed change-over-switch.

U1	brown
V1	blue
W1	black
U2	red
V2	grey
W2	orange
TB	white

High speed/D-connection



Low speed/Y-connection



8. EU-Declaration of conformity

EC-Declaration of conformity

as defined by the EC Low Voltage Directive 2006/95/EC, the EMC guideline 2004/108/EC, as well as ErP guideline 2009/125/EG.

The type of machinery:

- External rotor motor MK..., MW...
- Axial fan FA..., FB..., FC..., FE..., FF..., FS..., FT..., FH..., FL..., FN..., VR..., VN..., ZC..., ZF..., ZN...
- Centrifugal fan RA..., RD..., RE..., RF..., RG..., RH..., RK..., RM..., RR..., RZ..., GR..., ER...

Motor type:

- Asynchronous internal or external rotor motor with integrated frequency inverter for EDP system
- Electronically commutated internal or external rotor motor with integrated EC controller for EDP system

is developed, designed and manufactured in accordance with the EC Directives 2006/95/EC, 2004/108/EC and 2009/125/EC, on the own responsibility of

ZIEHL-ABEGG SE
Heinz-Ziehl-Strasse
D-74653 Kuenzelsau

The following standards are applied:

EN 60034-1:2010+Cor.:2010, EN 60204-1:2006, EN 60529:1991 + A1:2000, EN 61000-6-4:2007, EN 61000-6-2:2005

Compliance with the ErP Directive 2009/125/EC does not refer to external rotor motors MK..., MW...

Compliance with the EMC Directive 2004/108/EEC only applies to this product if it is connected according to the operating instructions. If this product is integrated in a system or complemented and operated with other components (e.g., switching and control equipment), the manufacturer of or company operating the overall plant is responsible for compliance with the EMC Directive 2004/108/EEC.

The complete technical documentation is available.

22.11.2013

Dr. W. Angelis - Technical Director Air Movement
Division



Ошибка! Текст указанного стиля в,
Ошибка! Текст указанного стиля в,

The Royal League Die Königsklasse



The Royal League in ventilation, control and drive technology

Intelligent control technology for any application

**ZIEHL-ABEGG system capabilities:
Everything from a single source – perfectly matched for optimal performance**

Please contact us. We would be pleased to design an individual solution for your requirements.

We would like to welcome you on our worldwide exhibitions. Please find our next exhibitions [here](#).

Ошибка! Текст указанного стиля в ,
Ошибка! Текст указанного стиля в ,

The Royal League Die Königsklasse



The Royal League in ventilation, control and drive technology

Intelligent control technology for any application

**ZIEHL-ABEGG system capabilities:
Everything from a single source – perfectly matched for optimal performance**

Please contact us. We would be pleased to design an individual solution for your requirements.

We would like to welcome you on our worldwide exhibitions. Please find our next exhibitions [here](#).